



Taking Hand Movement Out of The Picture

MEGA O.I.S.

[Optical Image Stabilizer]



A Little Hand Movement Can Be A Big Problem

All of us have taken a shot that we thought was focused perfectly, only to have it turn out blurry. The most common cause of this is hand movement. Digital cameras are wonderfully light and compact – but for the same reason they can also be hard to hold still. Even pressing the shutter button can cause the camera to move. And shooting with arms outstretched – using the LCD monitor which makes it easier to frame a shot – adds to the likelihood of hand movement. That's not all. Basically, hand movement is a real concern anytime you're taking a handheld telephoto shot, macro shot or self-portrait, or when shooting at night or in dim lighting.

Help Keep Your Shots Steady Even If You're Not

The answer to the hand movement problem? An advanced optical image stabilizing system that we call MEGA O.I.S. Optical Image Stabilizer. This system uses built-in gyrosensors to detect even tiny camera movement and then shifts a lens in the opposite direction to compensate. The system is completely optical – it does not affect the CCD or image processing – so you get sharp, clear images with no loss in image quality. If you know cameras, think of MEGA O.I.S. as having an effect similar to increasing the shutter speed by about three steps*. It greatly expands what you can do with a handheld digital camera.

*Varies with the shooting conditions.

Two Image Stabilizing Modes

Lumix cameras offer two image stabilization modes. In Mode 1 the O.I.S. lens is always compensating for camera movement, so the image is clear and easy to see even when you're looking at the monitor or through the viewfinder. This makes it easy to frame your shots. Mode 2 provides a slightly higher level of stabilization. Choose the one that's best for the scene you're shooting.

MODE 1:



The O.I.S. lens moves continuously, compensating for camera shake all the time.

MODE 2:



The O.I.S. lens remains near the image centre until you press the shutter button, for higher quality images.

Reducing Blurring Caused by Subject Movement

HIGH SENSITIVITY

Helps Reduce Motion Blur



When there's not a lot of light or you're using a slow shutter speed, hand movement isn't the only potential problem. There's also "motion blur" – the blurring that can result if your subject moves even a little in low lighting. New Lumix models – the TZ1, FX01, FZ7, LZ5 and LZ3 – fight both hand movement and motion blur. To these models we've added a High-Sensitivity mode that automatically sets the maximum sensitivity of ISO 1600 by using

the pixel-mixed readout method, effectively raising the shutter speed. It not only minimizes motion blur, it also lets you take clearer, sharper photos in dim lighting without using a flash. With the TZ1 equipped with the Venus Engine 3 LSI, you can manually set the ISO to 800. This lets you make the setting that best suits the scene, while minimizing motion blur at full resolution*.

* When using high sensitivity mode, resolution significantly decreases.

Performance for Clarity

MEGA O.I.S. OFF



MEGA O.I.S. ON



Spur-of-the-moment shots

MEGA O.I.S. OFF



MEGA O.I.S. ON



Beautiful Nightscapes

MEGA O.I.S. OFF



MEGA O.I.S. ON



Zoom Shots

MEGA O.I.S. OFF

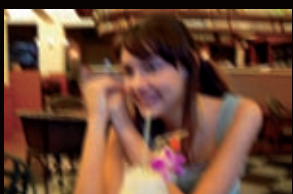


MEGA O.I.S. ON



Self Portraits

MEGA O.I.S. OFF



MEGA O.I.S. ON



Framing Your Subject in a Dimly Lit Room

MEGA O.I.S. OFF

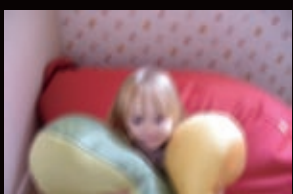


MEGA O.I.S. ON

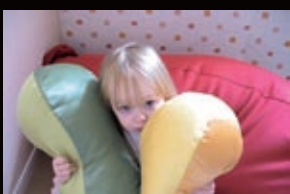


Macro Shots

MEGA O.I.S & HIGH ISO OFF



MEGA O.I.S & HIGH ISO ON



Moving Subjects in Dim Lighting

MEGA O.I.S & HIGH ISO OFF



MEGA O.I.S & HIGH ISO ON

